

GYROLED®

M130

CLASS 2

Advantages :

- LED beacon R65 and EMC approved
- High brightness R65 Class 2
- 13 flash patterns available
- Polycarbonate dome
- One central LED on Gyroled top for aerial identification
- Complies with ICAO & EASA standards for airports

**The only
French
beacon !**



Technical specification

ISO version:

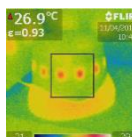
- Height 123 mm – diameter 184,5 mm
- Weight : 1,274 kg

Magnetic version :

- Height 146 mm – diameter 193 mm
- Weight : 2,221 kg

- 13 flash patterns
- Cruise function

- Input voltage : 12 - 24V
- Power supply : 22 W maximum
- Operating temperature : -40°C to +85°C
- Protection against polarity reversals
- Consumption : 12V : 1,8 A / 24V : 0,9 A



Optimal thermal control

Approvals

PHOTOMETRY :

R65 approval:

Blue Flash : TB2 (E2) 0016105
Blue Rotating : TB2 (E2) 0016106

Amber Flash : TA2 (E2) 0016107
Amber Rotating : TA2 (E2) 0016108

Red Flash : TR2 (E2) 0016221
Red Rotating : TR2 (E2) 0016220



PROTECTION RATINGS :

Impermeability: IP 45
Protection from mechanical impacts : IK06

EMC :

« E » marking Regulation R10 N° E2 10R05 16034
CISPR25 (2008) : class 5 radiated ; class 5 conducted



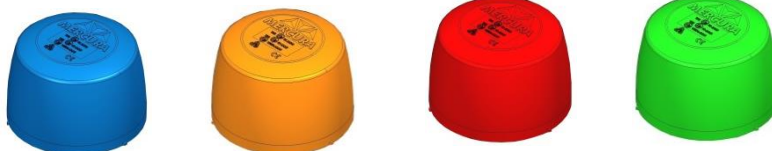
GYROLED®

M130



CLASS 2



4 COLOURS :



2 MOUNTINGS :

Mounting	Colour	Flashing mode	Item n°
 ISO	Blue	To program	28700
	Amber	To program	28701
	Red	To program	28703
	Green	To program	28704
 MAGNETIC CLP	Blue	Rotating *	29773
	Blue	Flash *	29774
	Amber	Rotating *	29775
	Amber	Flash *	29776
	Blue	Modifiable by the user	29619
	Amber	Modifiable by the user	29620
	Red	Modifiable by the user	29622
	Green	Modifiable by the user	29623

CLP : Cigar Light Plug

* Only one flash pattern